

Information For Patients/Caregivers

Hydrocodone, like all narcotics, may impair mental and/or physical abilities required for the performance of potentially hazardous tasks such as driving a car or operating machinery; patients should be cautioned accordingly.

Alcohol and other CNS depressants may produce an additive CNS depression, when taken with this combination product, and should be avoided.

Hydrocodone may be habit-forming. Patients should take the drug only for as long as it is prescribed, in the amounts prescribed, and no more frequently than prescribed.

- Do not take LORTAB 5/500 tablets if you are allergic to any of its ingredients.
- If you develop signs of allergy such as a rash or difficulty breathing stop taking LORTAB 5/500 tablets and contact your healthcare provider immediately.
- Do not take more than 4000 milligrams of acetaminophen per day. Call your doctor if you took more than the recommended dose.

Laboratory Tests

In patients with severe hepatic or renal disease, effects of therapy should be monitored with serial liver and/or renal function tests.

Drug Interactions

Patients receiving other narcotic analgesics, antihistamines, antipsychotics, anti-anxiety agents, or other CNS depressants (including alcohol) concomitantly with LORTAB 5/500 tablets may exhibit an additive CNS depression. When combined therapy is contemplated, the dose of one or both agents should be reduced.

The use of MAO inhibitors or tricyclic antidepressants with hydrocodone preparations may increase the effect of either the antidepressant or hydrocodone.

Drug/Laboratory Test Interactions

Acetaminophen may produce false-positive test results for urinary 5-hydroxyindoleacetic acid.

Carcinogenesis, Mutagenesis, Impairment Of Fertility

No adequate studies have been conducted in animals to determine whether hydrocodone or acetaminophen have a potential for carcinogenesis, mutagenesis, or impairment of fertility.

Pregnancy

Teratogenic Effects

Pregnancy Category C

There are no adequate and well-controlled studies in pregnant women. LORTAB 5/500 tablets should be used during pregnancy only if the potential benefit justifies the potential risk to the fetus.

Nonteratogenic Effects

Babies born to mothers who have been taking opioids regularly prior to delivery will be physically dependent. The withdrawal signs include irritability and excessive crying, tremors, hyperactive reflexes, increased respiratory rate, increased stools, sneezing, yawning, vomiting and fever. The intensity of the syndrome does not always correlate with the duration of maternal opioid use or dose. There is no consensus on the best method of managing withdrawal.

Labor And Delivery

As with all narcotics, administration of LORTAB 5/500 tablets to the mother shortly before delivery may result in some degree of respiratory depression in the newborn, especially if higher doses are used.

Nursing Mothers

Acetaminophen is excreted in breast milk in small amounts, but the significance of its effects on nursing infants is not known. It is not known whether hydrocodone is excreted in human milk. Because many drugs are excreted in human milk and because of the potential for serious adverse reactions in nursing infants from hydrocodone and acetaminophen, a decision should be made whether to discontinue nursing or to discontinue the drug, taking into account the importance of the drug to the mother.

Pediatric Use

Safety and effectiveness in the pediatric population have not been established.

Geriatric Use

Clinical studies of LORTAB 5/500 (hydrocodone bitartrate 5 mg and acetaminophen 500 mg) tablets did not include sufficient numbers of subjects aged 65 and over to determine whether they respond differently from younger subjects. Other reported clinical experience has not identified differences in responses between the elderly and younger patients. In general, dose selection for an elderly patient should be cautious, usually starting at the low end of the dosing range, reflecting the greater frequency of decreased hepatic, renal, or cardiac function, and of concomitant disease or other drug therapy.

Hydrocodone and the major metabolites of acetaminophen are known to be substantially excreted by the kidney. Thus the risk of toxic reactions may be greater in patients with impaired renal function due to the accumulation of the parent compound and/or metabolites in the plasma. Because elderly patients are more likely to have decreased renal function, care should be taken in dose selection, and it may be useful to monitor renal function.

Hydrocodone may cause confusion and over-sedation in the elderly; elderly patients generally should be started on low doses of hydrocodone bitartrate and acetaminophen tablets and observed closely.

ADVERSE REACTIONS

The most frequently reported adverse reactions include: light-headedness, dizziness, sedation, nausea and vomiting. These effects seem to be more prominent in ambulatory than in non-ambulatory patients and some of these adverse reactions may be alleviated if the patient lies down.

Other adverse reactions include:

Central Nervous System

Drowsiness, mental clouding, lethargy, impairment of mental and physical performance, anxiety, fear, dysphoria, psychological dependence, mood changes.

Gastrointestinal System

Prolonged administration of LORTAB 5/500 tablets may produce constipation.

Genitourinary System

Ureteral spasm, spasm of vesical sphincters and urinary retention have been reported with opiates.

Respiratory Depression

Hydrocodone bitartrate may produce dose-related respiratory depression by acting directly on the brain stem respiratory centers (see OVERDOSAGE).

Special Senses

Cases of hearing impairment or permanent loss have been reported predominantly in patients with chronic overdose.

Dermatological

Skin rash, pruritus.

The following adverse drug events may be borne in mind as potential effects of acetaminophen: allergic reactions, rash, thrombocytopenia, agranulocytosis.

Potential effects of high dosage are listed in the OVERDOSAGE section.

DRUG ABUSE AND DEPENDENCE

Misuse, Abuse, And Diversion Of Opioids

LORTAB 5/500 tablets contains hydrocodone, an opioid agonist, and is a Schedule III controlled substance. LORTAB 5/500 tablets, and other opioids, used in analgesia can be abused and are subject to criminal diversion.

Addiction is a primary, chronic, neurobiologic disease, with genetic, psychosocial, and environmental factors influencing its development and manifestations. It is characterized by behaviors that include one or more of the following: impaired control over drug use, compulsive use, continued use despite harm, and craving. Drug addiction is a treatable disease utilizing a multidisciplinary approach, but relapse is common.

“Drug seeking” behavior is very common in addicts and drug abusers. Drug-seeking tactics include emergency calls or visits near the end of office hours, refusal to undergo appropriate examination, testing or referral, repeated “loss” of prescriptions, tampering with prescriptions and reluctance to provide prior medical records or contact information for other treating physician(s). “Doctor shopping” to obtain additional prescriptions is common among drug abusers and people suffering from untreated addiction.

Abuse and addiction are separate and distinct from physical dependence and tolerance. Physical dependence usually assumes clinically significant dimensions only after several weeks of continued opioid use, although a mild degree of physical dependence may develop after a few days of opioid therapy. Tolerance, in which increasingly large doses are required in order to produce the same degree of analgesia, is manifested initially by a shortened duration of analgesic effect, and subsequently by decreases in the intensity of analgesia. The rate of development of tolerance varies among patients. Physicians should be aware that abuse of opioids can occur in the absence of true addiction and is characterized by misuse for non-medical purposes, often in combination with other psychoactive substances. LORTAB 5/500 tablets, like other opioids, may be diverted for non-medical use. Record-keeping of prescribing information, including quantity, frequency, and renewal requests is strongly advised.

Proper assessment of the patient, proper prescribing practices, periodic re-evaluation of therapy, and proper dispensing and storage are appropriate measures that help to limit abuse of opioid drugs.

OVERDOSAGE

Following an acute overdose, toxicity may result from hydrocodone or acetaminophen.

Signs And Symptoms

Hydrocodone

Serious overdose with hydrocodone is characterized by respiratory depression (a decrease in respiratory rate and/or tidal volume, Cheyne-Stokes respiration, cyanosis) extreme somnolence progressing to stupor or coma, skeletal muscle flaccidity, cold and clammy skin, and sometimes bradycardia and hypotension. In severe overdose, apnea, circulatory collapse, cardiac arrest and death may occur.

Acetaminophen

In acetaminophen overdose: dose-dependent, potentially fatal hepatic necrosis is the most serious adverse effect. Renal tubular necrosis, hypoglycemic coma and coagulation defects may also occur. Early symptoms following a potentially hepatotoxic overdose may

include: nausea, vomiting, diaphoresis and general malaise. Clinical and laboratory evidence of hepatic toxicity may not be apparent until 48 to 72 hours post-ingestion.

Treatment

A single or multiple drug overdose with hydrocodone and acetaminophen is a potentially lethal polydrug overdose, and consultation with a regional poison control center is recommended. Immediate treatment includes support of cardiorespiratory function and measures to reduce drug absorption. Oxygen, intravenous fluids, vasopressors, and other supportive measures should be employed as indicated. Assisted or controlled ventilation should also be considered.

For hydrocodone overdose, primary attention should be given to the reestablishment of adequate respiratory exchange through provision of a patent airway and the institution of assisted or controlled ventilation. The narcotic antagonist naloxone hydrochloride is a specific antidote against respiratory depression which may result from overdosage or unusual sensitivity to narcotics, including hydrocodone. Since the duration of action of hydrocodone may exceed that of the antagonist, the patient should be kept under continued surveillance, and repeated doses of the antagonist should be administered as needed to maintain adequate respiration. A narcotic antagonist should not be administered in the absence of clinically significant respiratory or cardiovascular depression.

Gastric decontamination with activated charcoal should be administered just prior to N-acetylcysteine (NAC) to decrease systemic absorption if acetaminophen ingestion is known or suspected to have occurred within a few hours of presentation. Serum acetaminophen levels should be obtained immediately if the patient presents 4 hours or more after ingestion to assess potential risk of hepatotoxicity; acetaminophen levels drawn less than 4 hours post-ingestion may be misleading. To obtain the best possible outcome, NAC should be administered as soon as possible where impending or evolving liver injury is suspected. Intravenous NAC may be administered when circumstances preclude oral administration.

Vigorous supportive therapy is required in severe intoxication. Procedures to limit the continuing absorption of the drug must be readily performed since the hepatic injury is dose dependent and occurs early in the course of intoxication.

DOSAGE AND ADMINISTRATION

Dosage should be adjusted according to severity of pain and response of the patient. However, it should be kept in mind that tolerance to hydrocodone can develop with continued use and that the incidence of untoward effects is dose related.

The usual adult dosage is one or two tablets every four to six hours as needed for pain. The total daily dosage should not exceed 8 tablets.

HOW SUPPLIED

LORTAB® 5/500 tablets (hydrocodone bitartrate and acetaminophen tablets, USP, 5 mg/500 mg) contain hydrocodone bitartrate 5 mg and acetaminophen 500 mg. They are supplied as white with blue specks, capsule-shaped, bisected tablets, debossed "ucb" on one side and "902" on the other side, in containers of 100 tablets NDC 50474-902-01, and 500 tablets NDC 50474-902-50.

Storage

Store at 20 to 25°C (68 to 77°F). [see USP Controlled Room Temperature]

Dispense in a tight, light-resistant container (as defined in the USP) with a child-resistant closure.

For Medical Information

Contact: Medical Affairs Department
Phone: (866) 822-0068
Fax: (770) 970-8859
A Schedule CIII controlled drug substance.



Manufactured for **UCB, Inc.**
Smyrna, GA 30080

Rev. 5E 05/2011

LORTAB® 7.5/500

Hydrocodone Bitartrate and Acetaminophen Tablets, USP III

7.5 mg/500 mg

Rx only

WARNING

Hepatotoxicity

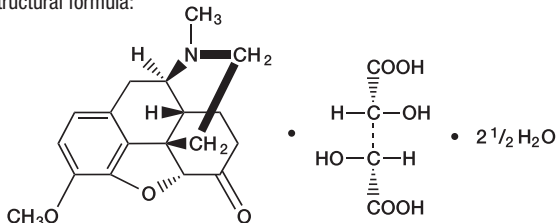
Acetaminophen has been associated with cases of acute liver failure, at times resulting in liver transplant and death. Most of the cases of liver injury are associated with the use of acetaminophen at doses that exceed 4000 milligrams per day, and often involve more than one acetaminophen-containing product (see WARNINGS).

DESCRIPTION

Hydrocodone bitartrate and acetaminophen is supplied in tablet form for oral administration.

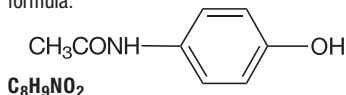
WARNING: May be habit-forming (see PRECAUTIONS, Information For Patients/Caregivers, and DRUG ABUSE AND DEPENDENCE).

Hydrocodone bitartrate is an opioid analgesic and antitussive and occurs as fine, white crystals or as a crystalline powder. It is affected by light. The chemical name is 4,5 α -epoxy-3-methoxy-17-methylmorphinan-6-one tartrate (1:1) hydrate (2:5). It has the following structural formula:



M.W. 494.490

Acetaminophen, 4'-hydroxyacetanilide, a slightly bitter, white, odorless, crystalline powder, is a non-opiate, non-salicylate analgesic and antipyretic. It has the following structural formula:



M.W. 151.16

Each LORTAB 7.5/500 tablet contains:

Hydrocodone Bitartrate	7.5 mg
Acetaminophen	500 mg

In addition, each tablet contains the following inactive ingredients: colloidal silicon dioxide, croscarmellose sodium, crospovidone, microcrystalline cellulose, povidone, pregelatinized starch, stearic acid and sugar spheres which are composed of starch derived from corn, sucrose, FD&C Blue #1 and D&C Yellow #10. Meets USP dissolution test 1.

CLINICAL PHARMACOLOGY

Hydrocodone is a semisynthetic narcotic analgesic and antitussive with multiple actions qualitatively similar to those of codeine. Most of these involve the central nervous system and smooth muscle. The precise mechanism of action of hydrocodone and other opiates is not known, although it is believed to relate to the existence of opiate receptors in the central nervous system. In addition to analgesia, narcotics may produce drowsiness, changes in mood and mental clouding.

The analgesic action of acetaminophen involves peripheral influences, but the specific mechanism is as yet undetermined. Antipyretic activity is mediated through hypothalamic heat regulating centers. Acetaminophen inhibits prostaglandin synthetase. Therapeutic doses of acetaminophen have negligible effects on the cardiovascular or respiratory systems; however, toxic doses may cause circulatory failure and rapid, shallow breathing.

Pharmacokinetics

The behavior of the individual components is described below.

Hydrocodone

Following a 10 mg oral dose of hydrocodone administered to five adult male subjects, the mean peak concentration was 23.6 ± 5.2 ng/mL. Maximum serum levels were achieved at 1.3 ± 0.3 hours and the half-life was determined to be 3.8 ± 0.3 hours. Hydrocodone exhibits a complex pattern of metabolism including O-demethylation, N-demethylation and 6-keto reduction to the corresponding 6- α - and 6- β -hydroxymetabolites.

See OVERDOSAGE for toxicity information.

Acetaminophen

Acetaminophen is rapidly absorbed from the gastrointestinal tract and is distributed throughout most body tissues. The plasma half-life is 1.25 to 3 hours, but may be increased by liver damage and following overdosage. Elimination of acetaminophen is principally by liver metabolism (conjugation) and subsequent renal excretion of metabolites. Approximately 85% of an oral dose appears in the urine within 24 hours of administration, most as the glucuronide conjugate, with small amounts of other conjugates and unchanged drug.

See OVERDOSAGE for toxicity information.

INDICATIONS AND USAGE

LORTAB 7.5/500 tablets (hydrocodone bitartrate and acetaminophen tablets, USP, 7.5 mg/500 mg) are indicated for the relief of moderate to moderately severe pain.

CONTRAINDICATIONS

This product should not be administered to patients who have previously exhibited hypersensitivity to hydrocodone or acetaminophen.

Patients known to be hypersensitive to other opioids may exhibit cross sensitivity to hydrocodone.

WARNINGS

Respiratory Depression

At high doses or in sensitive patients, hydrocodone may produce dose-related respiratory depression by acting directly on the brain stem respiratory center. Hydrocodone also affects the center that controls respiratory rhythm, and may produce irregular and periodic breathing.

Head Injury And Increased Intracranial Pressure

The respiratory depressant effects of narcotics and their capacity to elevate cerebrospinal fluid pressure may be markedly exaggerated in the presence of head injury, other intracranial lesions or a preexisting increase in intracranial pressure. Furthermore, narcotics produce adverse reactions which may obscure the clinical course of patients with head injuries.

Acute Abdominal Conditions

The administration of narcotics may obscure the diagnosis or clinical course of patients with acute abdominal conditions.

Misuse, Abuse, And Diversion Of Opioids

LORTAB 7.5/500 tablets contains hydrocodone, an opioid agonist, and is a Schedule III controlled substance. Opioid agonists have the potential for being abused and are sought by abusers and people with addiction disorders, and are subject to diversion.

LORTAB 7.5/500 tablets can be abused in a manner similar to other opioid agonists, legal or illicit. This should be considered when prescribing or dispensing LORTAB 7.5/500 tablets in situations where the physician or pharmacist is concerned about an increased risk of misuse, abuse or diversion (see DRUG ABUSE AND DEPENDENCE).

Hepatotoxicity

Acetaminophen has been associated with cases of acute liver failure, at times resulting in liver transplant and death. Most of the cases of liver injury are associated with the use of acetaminophen at doses that exceed 4000 milligrams per day, and often involve more than one acetaminophen-containing product. The excessive intake of acetaminophen may be intentional to cause self-harm or unintentional as patients attempt to obtain more pain relief or unknowingly take other acetaminophen-containing products.

The risk of acute liver failure is higher in individuals with underlying liver disease and in individuals who ingest alcohol while taking acetaminophen.

Instruct patients to look for acetaminophen or APAP on package labels and not to use more than one product that contains acetaminophen. Instruct patients to seek medical attention immediately upon ingestion of more than 4000 milligrams of acetaminophen per day, even if they feel well.

Hypersensitivity/ Anaphylaxis

There have been post-marketing reports of hypersensitivity and anaphylaxis associated with use of acetaminophen. Clinical signs included swelling of face, mouth, and throat, respiratory distress, urticaria, rash, pruritus, and vomiting. There were infrequent reports of life-threatening anaphylaxis requiring emergency medical attention. Instruct patients to discontinue LORTAB 7.5/500 tablets immediately and seek medical care if they experience these symptoms. Do not prescribe LORTAB 7.5/500 tablets for patients with acetaminophen allergy.

PRECAUTIONS

General

Special Risk Patients

As with any narcotic analgesic agent, LORTAB 7.5/500 tablets should be used with caution in elderly or debilitated patients, and those with severe impairment of hepatic or renal function, hypothyroidism, Addison's disease, prostatic hypertrophy or urethral stricture. The usual precautions should be observed and the possibility of respiratory depression should be kept in mind.

Cough Reflex

Hydrocodone suppresses the cough reflex; as with all narcotics, caution should be exercised when LORTAB 7.5/500 tablets are used postoperatively and in patients with pulmonary disease.

Information For Patients/Caregivers

Hydrocodone, like all narcotics, may impair mental and/or physical abilities required for the performance of potentially hazardous tasks such as driving a car or operating machinery; patients should be cautioned accordingly.

Alcohol and other CNS depressants may produce an additive CNS depression, when taken with this combination product, and should be avoided.

Hydrocodone may be habit-forming. Patients should take the drug only for as long as it is prescribed, in the amounts prescribed, and no more frequently than prescribed.

- Do not take LORTAB 7.5/500 tablets if you are allergic to any of its ingredients.
- If you develop signs of allergy such as a rash or difficulty breathing stop taking LORTAB 7.5/500 tablets and contact your healthcare provider immediately.
- Do not take more than 4000 milligrams of acetaminophen per day. Call your doctor if you took more than the recommended dose.

Laboratory Tests

In patients with severe hepatic or renal disease, effects of therapy should be monitored with serial liver and/or renal function tests.

Drug Interactions

Patients receiving narcotics, antihistamines, antipsychotics, antianxiety agents, or other CNS depressants (including alcohol) concomitantly with hydrocodone bitartrate and acetaminophen tablets may exhibit an additive CNS depression. When combined therapy is contemplated, the dose of one or both agents should be reduced.

The use of MAO inhibitors or tricyclic antidepressants with hydrocodone preparations may increase the effect of either the antidepressant or hydrocodone.

Drug/Laboratory Test Interactions

Acetaminophen may produce false-positive test results for urinary 5-hydroxyindoleacetic acid.

Carcinogenesis, Mutagenesis, Impairment Of Fertility

No adequate studies have been conducted in animals to determine whether hydrocodone or acetaminophen have a potential for carcinogenesis, mutagenesis, or impairment of fertility.

Pregnancy

Teratogenic Effects

Pregnancy Category C

There are no adequate and well-controlled studies in pregnant women. LORTAB 7.5/500 tablets should be used during pregnancy only if the potential benefit justifies the potential risk to the fetus.

Nonteratogenic Effects

Babies born to mothers who have been taking opioids regularly prior to delivery will be physically dependent. The withdrawal signs include irritability and excessive crying, tremors, hyperactive reflexes, increased respiratory rate, increased stools, sneezing, yawning, vomiting and fever. The intensity of the syndrome does not always correlate with the duration of maternal opioid use or dose. There is no consensus on the best method of managing withdrawal.

Labor And Delivery

As with all narcotics, administration of LORTAB 7.5/500 tablets to the mother shortly before delivery may result in some degree of respiratory depression in the newborn, especially if higher doses are used.

Nursing Mothers

Acetaminophen is excreted in breast milk in small amounts, but the significance of its effects on nursing infants is not known. It is not known whether hydrocodone is excreted in human milk. Because many drugs are excreted in human milk and because of the potential for serious adverse reactions in nursing infants from hydrocodone and acetaminophen, a decision should be made whether to discontinue nursing or to discontinue the drug, taking into account the importance of the drug to the mother.

Pediatric Use

Safety and effectiveness in the pediatric population have not been established.

Geriatric Use

Clinical studies of hydrocodone bitartrate and acetaminophen tablets did not include sufficient numbers of subjects aged 65 and over to determine whether they respond differently from younger subjects. Other reported clinical experience has not identified differences in responses between the elderly and younger patients. In general, dose selection for an elderly patient should be cautious, usually starting at the low end of the dosing range, reflecting the greater frequency of decreased hepatic, renal, or cardiac function, and of concomitant disease or other drug therapy.

Hydrocodone and the major metabolites of acetaminophen are known to be substantially excreted by the kidney. Thus the risk of toxic reactions may be greater in patients with impaired renal function due to the accumulation of the parent compound and/or metabolites in the plasma. Because elderly patients are more likely to have decreased renal function, care should be taken in dose selection, and it may be useful to monitor renal function.

Hydrocodone may cause confusion and over-sedation in the elderly; elderly patients generally should be started on low doses of hydrocodone bitartrate and acetaminophen tablets and observed closely.

ADVERSE REACTIONS

The most frequently reported adverse reactions are light-headedness, dizziness, sedation, nausea and vomiting. These effects seem to be more prominent in ambulatory than in non-ambulatory patients, and some of these adverse reactions may be alleviated if the patient lies down.

Other adverse reactions include:

Central Nervous System

Drowsiness, mental clouding, lethargy, impairment of mental and physical performance, anxiety, fear, dysphoria, psychological dependence, mood changes.

Gastrointestinal System

Prolonged administration of LORTAB 7.5/500 tablets may produce constipation.

Genitourinary System

Ureteral spasm, spasm of vesical sphincters and urinary retention have been reported with opiates.

Respiratory Depression

Hydrocodone bitartrate may produce dose-related respiratory depression by acting directly on the brain stem respiratory centers (see OVERDOSAGE).

Special Senses

Cases of hearing impairment or permanent loss have been reported predominantly in patients with chronic overdose.

Dermatological

Skin rash, pruritus.

The following adverse drug events may be borne in mind as potential effects of acetaminophen: allergic reactions, rash, thrombocytopenia, agranulocytosis.

Potential effects of high dosage are listed in the OVERDOSAGE section.

DRUG ABUSE AND DEPENDENCE

Misuse, Abuse, And Diversion Of Opioids

LORTAB 7.5/500 tablets contains hydrocodone, an opioid agonist, and is a Schedule III controlled substance. LORTAB 7.5/500 tablets, and other opioids, used in analgesia can be abused and are subject to criminal diversion.

Addiction is a primary, chronic, neurobiologic disease, with genetic, psychosocial, and environmental factors influencing its development and manifestations. It is characterized by behaviors that include one or more of the following: impaired control over drug use, compulsive use, continued use despite harm, and craving. Drug addiction is a treatable disease utilizing a multidisciplinary approach, but relapse is common.

“Drug seeking” behavior is very common in addicts and drug abusers. Drug-seeking tactics include emergency calls or visits near the end of office hours, refusal to undergo appropriate examination, testing or referral, repeated “loss” of prescriptions, tampering with prescriptions and reluctance to provide prior medical records or contact information for other treating physician(s). “Doctor shopping” to obtain additional prescriptions is common among drug abusers and people suffering from untreated addiction.

Abuse and addiction are separate and distinct from physical dependence and tolerance. Physical dependence usually assumes clinically significant dimensions only after several weeks of continued opioid use, although a mild degree of physical dependence may develop after a few days of opioid therapy. Tolerance, in which increasingly large doses are required in order to produce the same degree of analgesia, is manifested initially by a shortened duration of analgesic effect, and subsequently by decreases in the intensity of analgesia. The rate of development of tolerance varies among patients. Physicians should be aware that abuse of opioids can occur in the absence of true addiction and is characterized by misuse for non-medical purposes, often in combination with other psychoactive substances. LORTAB 7.5/500 tablets, like other opioids, may be diverted for non-medical use. Record-keeping of prescribing information, including quantity, frequency, and renewal requests is strongly advised.

Proper assessment of the patient, proper prescribing practices, periodic re-evaluation of therapy, and proper dispensing and storage are appropriate measures that help to limit abuse of opioid drugs.

OVERDOSAGE

Following an acute overdosage, toxicity may result from hydrocodone or acetaminophen.

Signs And Symptoms

Hydrocodone

Serious overdose with hydrocodone is characterized by respiratory depression (a decrease in respiratory rate and/or tidal volume, Cheyne-Stokes respiration, cyanosis) extreme somnolence progressing to stupor or coma, skeletal muscle flaccidity, cold and clammy skin, and sometimes bradycardia and hypotension. In severe overdosage, apnea, circulatory collapse, cardiac arrest and death may occur.

Acetaminophen

In acetaminophen overdosage: dose-dependent, potentially fatal hepatic necrosis is the most serious adverse effect. Renal tubular necrosis, hypoglycemic coma and coagulation defects may also occur. Early symptoms following a potentially hepatotoxic overdose may

include: nausea, vomiting, diaphoresis and general malaise. Clinical and laboratory evidence of hepatic toxicity may not be apparent until 48 to 72 hours post-ingestion.

Treatment

A single or multiple drug overdose with hydrocodone and acetaminophen is a potentially lethal polydrug overdose, and consultation with a regional poison control center is recommended. Immediate treatment includes support of cardiorespiratory function and measures to reduce drug absorption. Oxygen, intravenous fluids, vasopressors, and other supportive measures should be employed as indicated. Assisted or controlled ventilation should also be considered.

For hydrocodone overdose, primary attention should be given to the reestablishment of adequate respiratory exchange through provision of a patent airway and the institution of assisted or controlled ventilation. The narcotic antagonist naloxone hydrochloride is a specific antidote against respiratory depression which may result from overdosage or unusual sensitivity to narcotics, including hydrocodone. Since the duration of action of hydrocodone may exceed that of the antagonist, the patient should be kept under continued surveillance, and repeated doses of the antagonist should be administered as needed to maintain adequate respiration. A narcotic antagonist should not be administered in the absence of clinically significant respiratory or cardiovascular depression.

Gastric decontamination with activated charcoal should be administered just prior to N-acetylcysteine (NAC) to decrease systemic absorption if acetaminophen ingestion is known or suspected to have occurred within a few hours of presentation. Serum acetaminophen levels should be obtained immediately if the patient presents 4 hours or more after ingestion to assess potential risk of hepatotoxicity; acetaminophen levels drawn less than 4 hours post-ingestion may be misleading. To obtain the best possible outcome, NAC should be administered as soon as possible where impending or evolving liver injury is suspected. Intravenous NAC may be administered when circumstances preclude oral administration.

Vigorous supportive therapy is required in severe intoxication. Procedures to limit the continuing absorption of the drug must be readily performed since the hepatic injury is dose dependent and occurs early in the course of intoxication.

DOSAGE AND ADMINISTRATION

Dosage should be adjusted according to severity of pain and response of the patient. However, it should be kept in mind that tolerance to hydrocodone can develop with continued use and that the incidence of untoward effects is dose related.

The usual adult dosage is one tablet every four to six hours as needed for pain. The total daily dosage should not exceed 6 tablets.

HOW SUPPLIED

LORTAB 7.5/500 tablets (hydrocodone bitartrate and acetaminophen tablets, USP, 7.5 mg/500 mg) contain hydrocodone bitartrate 7.5 mg and acetaminophen 500 mg. They are supplied as white with green specks, capsule-shaped, bisected tablets, debossed “ucb” on one side and “903” on the other side, in containers of 100 tablets NDC 50474-907-01 and 500 tablets NDC 50474-907-50.

Storage

Store at 20 to 25°C (68 to 77°F). [see USP Controlled Room Temperature]
Dispense in a tight, light-resistant container with a child-resistant closure.

For Medical Information

Contact: Medical Affairs Department
Phone: (866) 822-0068
Fax: (770) 970-8859

A Schedule CIII Narcotic



Manufactured for **UCB, Inc.**
Smyrna, GA 30080

Rev. 5E 05/2011

LORTAB® 10/500

Hydrocodone Bitartrate and Acetaminophen Tablets, USP

10 mg/500 mg

 only

WARNING

Hepatotoxicity

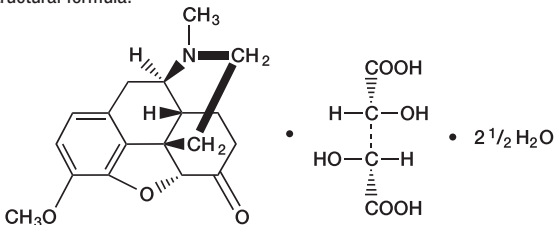
Acetaminophen has been associated with cases of acute liver failure, at times resulting in liver transplant and death. Most of the cases of liver injury are associated with the use of acetaminophen at doses that exceed 4000 milligrams per day, and often involve more than one acetaminophen-containing product (see WARNINGS).

DESCRIPTION

Hydrocodone bitartrate and acetaminophen is supplied in tablet form for oral administration.

WARNING: May be habit-forming (see PRECAUTIONS, Information For Patients/Caregivers, and DRUG ABUSE AND DEPENDENCE).

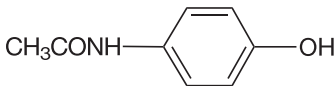
Hydrocodone bitartrate is an opioid analgesic and antitussive and occurs as fine, white crystals or as a crystalline powder. It is affected by light. The chemical name is 4,5 α -epoxy-3-methoxy-17-methylmorphinan-6-one tartrate (1:1) hydrate (2:5). It has the following structural formula:



$C_{18}H_{21}NO_3 \cdot C_4H_6O_6 \cdot 2 \frac{1}{2} H_2O$

M.W. 494.490

Acetaminophen, 4'-hydroxyacetanilide, a slightly bitter, white, odorless, crystalline powder, is a non-opiate, non-salicylate analgesic and antipyretic. It has the following structural formula:



$C_8H_9NO_2$

M.W. 151.16

Each LORTAB 10/500 tablet contains:

Hydrocodone Bitartrate 10 mg
Acetaminophen 500 mg

In addition, each tablet contains the following inactive ingredients: D&C Red No. 27 Aluminum Lake, D&C Red No. 30 Aluminum Lake, colloidal silicon dioxide, croscarmellose sodium, crospovidone, microcrystalline cellulose, povidone, pregelatinized starch, starch (corn), and stearic acid. Meets USP dissolution test 1.

CLINICAL PHARMACOLOGY

Hydrocodone is a semisynthetic narcotic analgesic and antitussive with multiple actions qualitatively similar to those of codeine. Most of these involve the central nervous system and smooth muscle. The precise mechanism of action of hydrocodone and other opiates is not known, although it is believed to relate to the existence of opiate receptors in the central nervous system. In addition to analgesia, narcotics may produce drowsiness, changes in mood and mental clouding.

The analgesic action of acetaminophen involves peripheral influences, but the specific mechanism is as yet undetermined. Antipyretic activity is mediated through hypothalamic heat regulating centers. Acetaminophen inhibits prostaglandin synthetase. Therapeutic doses of acetaminophen have negligible effects on the cardiovascular or respiratory systems; however, toxic doses may cause circulatory failure and rapid, shallow breathing.

Pharmacokinetics

The behavior of the individual components is described below.

Hydrocodone

Following a 10 mg oral dose of hydrocodone administered to five adult male subjects, the mean peak concentration was 23.6 \pm 5.2 ng/mL. Maximum serum levels were achieved at 1.3 \pm 0.3 hours and the half-life was determined to be 3.8 \pm 0.3 hours. Hydrocodone exhibits a complex pattern of metabolism including O-demethylation, N-demethylation and 6-keto reduction to the corresponding 6- α - and 6- β -hydroxymetabolites.

See OVERDOSAGE for toxicity information.

Acetaminophen

Acetaminophen is rapidly absorbed from the gastrointestinal tract and is distributed throughout most body tissues. The plasma half-life is 1.25 to 3 hours, but may be increased by liver damage and following overdosage. Elimination of acetaminophen is principally by liver metabolism (conjugation) and subsequent renal excretion of metabolites. Approximately

85% of an oral dose appears in the urine within 24 hours of administration, most as the glucuronide conjugate, with small amounts of other conjugates and unchanged drug.

See OVERDOSAGE for toxicity information.

INDICATIONS AND USAGE

LORTAB 10/500 tablets (hydrocodone bitartrate and acetaminophen tablets, USP, 10 mg/500 mg) are indicated for the relief of moderate to moderately severe pain.

CONTRAINDICATIONS

This product should not be administered to patients who have previously exhibited hypersensitivity to hydrocodone or acetaminophen.

Patients known to be hypersensitive to other opioids may exhibit cross sensitivity to hydrocodone.

WARNINGS

Respiratory Depression

At high doses or in sensitive patients, hydrocodone may produce dose-related respiratory depression by acting directly on the brain stem respiratory center. Hydrocodone also affects the center that controls respiratory rhythm, and may produce irregular and periodic breathing.

Head Injury And Increased Intracranial Pressure

The respiratory depressant effects of narcotics and their capacity to elevate cerebrospinal fluid pressure may be markedly exaggerated in the presence of head injury, other intracranial lesions or a preexisting increase in intracranial pressure. Furthermore, narcotics produce adverse reactions which may obscure the clinical course of patients with head injuries.

Acute Abdominal Conditions

The administration of narcotics may obscure the diagnosis or clinical course of patients with acute abdominal conditions.

Misuse, Abuse, And Diversion Of Opioids

LORTAB 10/500 tablets contains hydrocodone, an opioid agonist, and is a Schedule III controlled substance. Opioid agonists have the potential for being abused and are sought by abusers and people with addiction disorders, and are subject to diversion.

LORTAB 10/500 tablets can be abused in a manner similar to other opioid agonists, legal or illicit. This should be considered when prescribing or dispensing LORTAB 10/500 tablets in situations where the physician or pharmacist is concerned about an increased risk of misuse, abuse or diversion (see DRUG ABUSE AND DEPENDENCE).

Hepatotoxicity

Acetaminophen has been associated with cases of acute liver failure, at times resulting in liver transplant and death. Most of the cases of liver injury are associated with the use of acetaminophen at doses that exceed 4000 milligrams per day, and often involve more than one acetaminophen-containing product. The excessive intake of acetaminophen may be intentional to cause self-harm or unintentional as patients attempt to obtain more pain relief or unknowingly take other acetaminophen-containing products.

The risk of acute liver failure is higher in individuals with underlying liver disease and in individuals who ingest alcohol while taking acetaminophen.

Instruct patients to look for acetaminophen or APAP on package labels and not to use more than one product that contains acetaminophen. Instruct patients to seek medical attention immediately upon ingestion of more than 4000 milligrams of acetaminophen per day, even if they feel well.

Hypersensitivity/ Anaphylaxis

There have been post-marketing reports of hypersensitivity and anaphylaxis associated with use of acetaminophen. Clinical signs included swelling of face, mouth, and throat, respiratory distress, urticaria, rash, pruritus, and vomiting. There were infrequent reports of life-threatening anaphylaxis requiring emergency medical attention. Instruct patients to discontinue LORTAB 10/500 tablets immediately and seek medical care if they experience these symptoms. Do not prescribe LORTAB 10/500 tablets for patients with acetaminophen allergy.

PRECAUTIONS

General

Special Risk Patients

As with any narcotic analgesic agent, LORTAB 10/500 tablets should be used with caution in elderly or debilitated patients, and those with severe impairment of hepatic or renal function, hypothyroidism, Addison's disease, prostatic hypertrophy or urethral stricture. The usual precautions should be observed and the possibility of respiratory depression should be kept in mind.

Cough Reflex

Hydrocodone suppresses the cough reflex; as with all narcotics, caution should be exercised when LORTAB 10/500 tablets are used postoperatively and in patients with pulmonary disease.

Information For Patients/Caregivers

Hydrocodone, like all narcotics, may impair mental and/or physical abilities required for the performance of potentially hazardous tasks such as driving a car or operating machinery; patients should be cautioned accordingly.

Alcohol and other CNS depressants may produce an additive CNS depression, when taken with this combination product, and should be avoided.

Hydrocodone may be habit-forming. Patients should take the drug only for as long as it is prescribed, in the amounts prescribed, and no more frequently than prescribed.

- Do not take LORTAB 10/500 tablets if you are allergic to any of its ingredients.
- If you develop signs of allergy such as a rash or difficulty breathing stop taking LORTAB 10/500 tablets and contact your healthcare provider immediately.
- Do not take more than 4000 milligrams of acetaminophen per day. Call your doctor if you took more than the recommended dose.

Laboratory Tests

In patients with severe hepatic or renal disease, effects of therapy should be monitored with serial liver and/or renal function tests.

Drug Interactions

Patients receiving narcotics, antihistamines, antipsychotics, anti-anxiety agents, or other CNS depressants (including alcohol) concomitantly with hydrocodone bitartrate and acetaminophen tablets may exhibit an additive CNS depression. When combined therapy is contemplated, the dose of one or both agents should be reduced.

The use of MAO inhibitors or tricyclic antidepressants with hydrocodone preparations may increase the effect of either the antidepressant or hydrocodone.

Drug/Laboratory Test Interactions

Acetaminophen may produce false-positive test results for urinary 5-hydroxyindoleacetic acid.

Carcinogenesis, Mutagenesis, Impairment Of Fertility

No adequate studies have been conducted in animals to determine whether hydrocodone or acetaminophen have a potential for carcinogenesis, mutagenesis, or impairment of fertility.

Pregnancy

Teratogenic Effects

Pregnancy Category C

There are no adequate and well-controlled studies in pregnant women. LORTAB 10/500 tablets should be used during pregnancy only if the potential benefit justifies the potential risk to the fetus.

Nonteratogenic Effects

Babies born to mothers who have been taking opioids regularly prior to delivery will be physically dependent. The withdrawal signs include irritability and excessive crying, tremors, hyperactive reflexes, increased respiratory rate, increased stools, sneezing, yawning, vomiting and fever. The intensity of the syndrome does not always correlate with the duration of maternal opioid use or dose. There is no consensus on the best method of managing withdrawal.

Labor And Delivery

As with all narcotics, administration of LORTAB 10/500 tablets to the mother shortly before delivery may result in some degree of respiratory depression in the newborn, especially if higher doses are used.

Nursing Mothers

Acetaminophen is excreted in breast milk in small amounts, but the significance of its effects on nursing infants is not known. It is not known whether hydrocodone is excreted in human milk. Because many drugs are excreted in human milk and because of the potential for serious adverse reactions in nursing infants from hydrocodone and acetaminophen, a decision should be made whether to discontinue nursing or to discontinue the drug, taking into account the importance of the drug to the mother.

Pediatric Use

Safety and effectiveness in the pediatric population have not been established.

Geriatric Use

Clinical studies of hydrocodone bitartrate and acetaminophen tablets did not include sufficient numbers of subjects aged 65 and over to determine whether they respond differently from younger subjects. Other reported clinical experience has not identified differences in responses between the elderly and younger patients. In general, dose selection for an elderly patient should be cautious, usually starting at the low end of the dosing range, reflecting the greater frequency of decreased hepatic, renal, or cardiac function, and of concomitant disease or other drug therapy.

Hydrocodone and the major metabolites of acetaminophen are known to be substantially excreted by the kidney. Thus the risk of toxic reactions may be greater in patients with

impaired renal function due to the accumulation of the parent compound and/or metabolites in the plasma. Because elderly patients are more likely to have decreased renal function, care should be taken in dose selection, and it may be useful to monitor renal function.

Hydrocodone may cause confusion and over-sedation in the elderly; elderly patients generally should be started on low doses of hydrocodone bitartrate and acetaminophen tablets and observed closely.

ADVERSE REACTIONS

The most frequently reported adverse reactions are light-headedness, dizziness, sedation, nausea and vomiting. These effects seem to be more prominent in ambulatory than in non-ambulatory patients, and some of these adverse reactions may be alleviated if the patient lies down.

Other adverse reactions include:

Central Nervous System

Drowsiness, mental clouding, lethargy, impairment of mental and physical performance, anxiety, fear, dysphoria, psychological dependence, mood changes.

Gastrointestinal System

Prolonged administration of LORTAB 10/500 tablets may produce constipation.

Genitourinary System

Ureteral spasm, spasm of vesical sphincters and urinary retention have been reported with opiates.

Respiratory Depression

Hydrocodone bitartrate may produce dose-related respiratory depression by acting directly on the brain stem respiratory centers (see OVERDOSAGE).

Special Senses

Cases of hearing impairment or permanent loss have been reported predominantly in patients with chronic overdose.

Dermatological

Skin rash, pruritus.

The following adverse drug events may be borne in mind as potential effects of acetaminophen: allergic reactions, rash, thrombocytopenia, agranulocytosis.

Potential effects of high dosage are listed in the OVERDOSAGE section.

DRUG ABUSE AND DEPENDENCE

Misuse, Abuse, And Diversion Of Opioids

LORTAB 10/500 tablets contains hydrocodone, an opioid agonist, and is a Schedule III controlled substance. LORTAB 10/500 tablets, and other opioids, used in analgesia can be abused and are subject to criminal diversion.

Addiction is a primary, chronic, neurobiologic disease, with genetic, psychosocial, and environmental factors influencing its development and manifestations. It is characterized by behaviors that include one or more of the following: impaired control over drug use, compulsive use, continued use despite harm, and craving. Drug addiction is a treatable disease utilizing a multidisciplinary approach, but relapse is common.

“Drug seeking” behavior is very common in addicts and drug abusers. Drug-seeking tactics include emergency calls or visits near the end of office hours, refusal to undergo appropriate examination, testing or referral, repeated “loss” of prescriptions, tampering with prescriptions and reluctance to provide prior medical records or contact information for other treating physician(s). “Doctor shopping” to obtain additional prescriptions is common among drug abusers and people suffering from untreated addiction.

Abuse and addiction are separate and distinct from physical dependence and tolerance. Physical dependence usually assumes clinically significant dimensions only after several weeks of continued opioid use, although a mild degree of physical dependence may develop after a few days of opioid therapy. Tolerance, in which increasingly large doses are required in order to produce the same degree of analgesia, is manifested initially by a shortened duration of analgesic effect, and subsequently by decreases in the intensity of analgesia. The rate of development of tolerance varies among patients. Physicians should be aware that abuse of opioids can occur in the absence of true addiction and is characterized by misuse for non-medical purposes, often in combination with other psychoactive substances. LORTAB 10/500 tablets, like other opioids, may be diverted for non-medical use. Record-keeping of prescribing information, including quantity, frequency, and renewal requests is strongly advised.

Proper assessment of the patient, proper prescribing practices, periodic re-evaluation of therapy, and proper dispensing and storage are appropriate measures that help to limit abuse of opioid drugs.

OVERDOSAGE

Following an acute overdose, toxicity may result from hydrocodone or acetaminophen.

Signs And Symptoms

Hydrocodone

Serious overdose with hydrocodone is characterized by respiratory depression (a decrease in respiratory rate and/or tidal volume, Cheyne-Stokes respiration, cyanosis) extreme somnolence progressing to stupor or coma, skeletal muscle flaccidity, cold and clammy

skin, and sometimes bradycardia and hypotension. In severe overdose, apnea, circulatory collapse, cardiac arrest and death may occur.

Acetaminophen

In acetaminophen overdose: dose-dependent, potentially fatal hepatic necrosis is the most serious adverse effect. Renal tubular necrosis, hypoglycemic coma and coagulation defects may also occur. Early symptoms following a potentially hepatotoxic overdose may include: nausea, vomiting, diaphoresis, and general malaise. Clinical and laboratory evidence of hepatic toxicity may not be apparent until 48 to 72 hours post-ingestion.

Treatment

A single or multiple drug overdose with hydrocodone and acetaminophen is a potentially lethal polydrug overdose, and consultation with a regional poison control center is recommended. Immediate treatment includes support of cardiorespiratory function and measures to reduce drug absorption. Oxygen, intravenous fluids, vasopressors, and other supportive measures should be employed as indicated. Assisted or controlled ventilation should also be considered.

For hydrocodone overdose, primary attention should be given to the reestablishment of adequate respiratory exchange through provision of a patent airway and the institution of assisted or controlled ventilation. The narcotic antagonist naloxone hydrochloride is a specific antidote against respiratory depression which may result from overdose or unusual sensitivity to narcotics, including hydrocodone. Since the duration of action of hydrocodone may exceed that of the antagonist, the patient should be kept under continued surveillance, and repeated doses of the antagonist should be administered as needed to maintain adequate respiration. A narcotic antagonist should not be administered in the absence of clinically significant respiratory or cardiovascular depression.

Gastric decontamination with activated charcoal should be administered just prior to N-acetylcysteine (NAC) to decrease systemic absorption if acetaminophen ingestion is known or suspected to have occurred within a few hours of presentation. Serum acetaminophen levels should be obtained immediately if the patient presents 4 hours or more after ingestion to assess potential risk of hepatotoxicity; acetaminophen levels drawn less than 4 hours post-ingestion may be misleading. To obtain the best possible outcome, NAC should be administered as soon as possible where impending or evolving liver injury is suspected. Intravenous NAC may be administered when circumstances preclude oral administration.

Vigorous supportive therapy is required in severe intoxication. Procedures to limit the continuing absorption of the drug must be readily performed since the hepatic injury is dose dependent and occurs early in the course of intoxication.

DOSAGE AND ADMINISTRATION

Dosage should be adjusted according to severity of pain and response of the patient. However, it should be kept in mind that tolerance to hydrocodone can develop with continued use and that the incidence of untoward effects is dose related.

The usual adult dosage is one tablet every four to six hours as needed for pain. The total daily dosage should not exceed 6 tablets.

HOW SUPPLIED

LORTAB 10/500 tablets (hydrocodone bitartrate and acetaminophen tablets, USP, 10 mg/500 mg) contain hydrocodone bitartrate 10 mg and acetaminophen 500 mg. They are supplied as pink, capsule-shaped, bisected tablets, debossed "ucb" on one side and "910" on the other side, in containers of 100 tablets NDC 50474-910-01, and 500 tablets NDC 50474-910-50.

Storage

Store at 20 to 25°C (68 to 77°F). [see USP Controlled Room Temperature]
Dispense in a tight, light-resistant container with a child-resistant closure.

For Medical Information

Contact: Medical Affairs Department
Phone: (866) 822-0068
Fax: (770) 970-8859

A Schedule CIII Narcotic



Manufactured for **UCB, Inc.**
Smyrna, GA 30080

Rev. 6E 05/2011

LORTAB[®] ELIXIR

Hydrocodone Bitartrate and Acetaminophen Oral Solution CIII

7.5 mg/500 mg per 15 mL

R_x only

WARNING

Hepatotoxicity

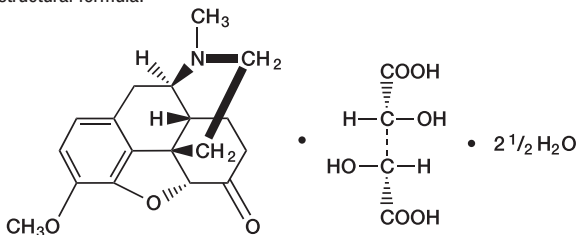
Acetaminophen has been associated with cases of acute liver failure, at times resulting in liver transplant and death. Most of the cases of liver injury are associated with the use of acetaminophen at doses that exceed 4000 milligrams per day, and often involve more than one acetaminophen-containing product (see WARNINGS).

DESCRIPTION

Hydrocodone bitartrate and acetaminophen is supplied in liquid form for oral administration.

WARNING: May be habit-forming (see PRECAUTIONS, Information For Patients/Caregivers, and DRUG ABUSE AND DEPENDENCE).

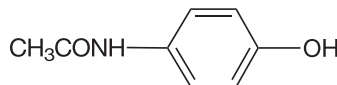
Hydrocodone bitartrate is an opioid analgesic and antitussive and occurs as fine, white crystals or as a crystalline powder. It is affected by light. The chemical name is 4,5 α -epoxy-3-methoxy-17-methylmorphinan-6-one tartrate (1:1) hydrate (2:5). It has the following structural formula:



C₁₈H₂₁NO₃ · C₄H₆O₆ · 2 ½ H₂O

M.W. 494.490

Acetaminophen, 4'-hydroxyacetanilide, a slightly bitter, white, odorless, crystalline powder, is a non-opiate, non-salicylate analgesic and antipyretic. It has the following structural formula:



C₈H₉NO₂

M.W. 151.16

LORTAB Elixir contains:	Per 5 mL	Per 15 mL
Hydrocodone Bitartrate	2.5 mg	7.5 mg
Acetaminophen	167 mg	500 mg
Alcohol	7%	7%

In addition, the liquid contains the following inactive ingredients: citric acid anhydrous, ethyl maltol, glycerin, methylparaben, propylene glycol, propylparaben, purified water, saccharin sodium, sorbitol solution, sucrose, with D&C Yellow #10 and FD&C Yellow #6 as coloring and natural and artificial flavoring.

CLINICAL PHARMACOLOGY

Hydrocodone is a semisynthetic narcotic analgesic and antitussive with multiple actions qualitatively similar to those of codeine. Most of these involve the central nervous system and smooth muscle. The precise mechanism of action of hydrocodone and other opiates is not known, although it is believed to relate to the existence of opiate receptors in the central nervous system. In addition to analgesia, narcotics may produce drowsiness, changes in mood and mental clouding.

The analgesic action of acetaminophen involves peripheral influences, but the specific mechanism is as yet undetermined. Antipyretic activity is mediated through hypothalamic heat regulating centers. Acetaminophen inhibits prostaglandin synthetase. Therapeutic doses of acetaminophen have negligible effects on the cardiovascular or respiratory systems; however, toxic doses may cause circulatory failure and rapid, shallow breathing.

Pharmacokinetics

The behavior of the individual components is described below.

Hydrocodone

Following a 10 mg oral dose of hydrocodone administered to five adult male subjects, the mean peak concentration was 23.6 ± 5.2 ng/mL. Maximum serum levels were achieved at 1.3 ± 0.3 hours and the half-life was determined to be 3.8 ± 0.3 hours. Hydrocodone exhibits a complex pattern of metabolism including O-demethylation, N-demethylation and 6-keto reduction to the corresponding 6- α - and 6- β -hydroxymetabolites.

See OVERDOSAGE for toxicity information.

Acetaminophen

Acetaminophen is rapidly absorbed from the gastrointestinal tract and is distributed throughout most body tissues. The plasma half-life is 1.25 to 3 hours, but may be increased by liver damage and following overdosage. Elimination of acetaminophen is principally by liver metabolism (conjugation) and subsequent renal excretion of metabolites. Approximately 85% of an oral dose appears in the urine within 24 hours of administration, most as the glucuronide conjugate, with small amounts of other conjugates and unchanged drug.

See OVERDOSAGE for toxicity information.

INDICATIONS AND USAGE

LORTAB Elixir (hydrocodone bitartrate and acetaminophen oral solution) is indicated for the relief of moderate to moderately severe pain.

CONTRAINDICATIONS

This product should not be administered to patients who have previously exhibited hypersensitivity to hydrocodone, acetaminophen, or any other component of this product.

Patients known to be hypersensitive to other opioids may exhibit cross sensitivity to hydrocodone.

WARNINGS

Respiratory Depression

At high doses or in sensitive patients, hydrocodone may produce dose-related respiratory depression by acting directly on the brain stem respiratory center. Hydrocodone also affects the center that controls respiratory rhythm, and may produce irregular and periodic breathing.

Infants may have increased sensitivity to the respiratory depressant effects of opioids (see PRECAUTIONS, Pediatric Use). If use of LORTAB Elixir in such patients is contemplated, it should be administered cautiously, in substantially reduced initial doses, by personnel experienced in administering opioids to infants, and with intensive monitoring.

Head Injury And Increased Intracranial Pressure

The respiratory depressant effects of narcotics and their capacity to elevate cerebrospinal fluid pressure may be markedly exaggerated in the presence of head injury, other intracranial lesions or a preexisting increase in intracranial pressure. Furthermore, narcotics produce adverse reactions, which may obscure the clinical course of patients with head injuries.

Acute Abdominal Conditions

The administration of narcotics may obscure the diagnosis or clinical course of patients with acute abdominal conditions.

Misuse, Abuse, And Diversion Of Opioids

LORTAB Elixir contains hydrocodone, an opioid agonist, and is a Schedule III controlled substance. Opioid agonists have the potential for being abused and are sought by abusers and people with addiction disorders, and are subject to diversion.

LORTAB Elixir can be abused in a manner similar to other opioid agonists, legal or illicit. This should be considered when prescribing or dispensing LORTAB Elixir in situations where the physician or pharmacist is concerned about an increased risk of misuse, abuse or diversion (see DRUG ABUSE AND DEPENDENCE).

Hepatotoxicity

Acetaminophen has been associated with cases of acute liver failure, at times resulting in liver transplant and death. Most of the cases of liver injury are associated with the use of acetaminophen at doses that exceed 4000 milligrams per day, and often involve more than one acetaminophen-containing product. The excessive intake of acetaminophen may be intentional to cause self-harm or unintentional as patients attempt to obtain more pain relief or unknowingly take other acetaminophen-containing products.

The risk of acute liver failure is higher in individuals with underlying liver disease and in individuals who ingest alcohol while taking acetaminophen.

Instruct patients to look for acetaminophen or APAP on package labels and not to use more than one product that contains acetaminophen. Instruct patients to seek medical attention immediately upon ingestion of more than 4000 milligrams of acetaminophen per day, even if they feel well.

Hypersensitivity/ Anaphylaxis

There have been post-marketing reports of hypersensitivity and anaphylaxis associated with use of acetaminophen. Clinical signs included swelling of face, mouth, and throat, respiratory distress, urticaria, rash, pruritus, and vomiting. There were infrequent reports of life-threatening anaphylaxis requiring emergency medical attention. Instruct patients to discontinue LORTAB Elixir immediately and seek medical care if they experience these symptoms. Do not prescribe LORTAB Elixir for patients with acetaminophen allergy.

PRECAUTIONS

General

Special Risk Patients

As with any narcotic analgesic agent, LORTAB Elixir should be used with caution in elderly or debilitated patients, and those with severe impairment of hepatic or renal function, hypothyroidism, Addison's disease, prostatic hypertrophy or urethral stricture. The usual precautions should be observed and the possibility of respiratory depression should be kept in mind.

Cough Reflex

Hydrocodone suppresses the cough reflex; as with all narcotics, caution should be exercised when LORTAB Elixir are used postoperatively and in patients with pulmonary disease.

Information For Patients/Caregivers

Hydrocodone, like all narcotics, may impair mental and/or physical abilities required for the performance of potentially hazardous tasks such as driving a car or operating machinery. Such tasks should be avoided while taking this product. Alcohol and other CNS depressants may produce an additive CNS depression, when taken with this combination product, and should be avoided.

Hydrocodone may be habit-forming. Patients should take the drug only for as long as it is prescribed, in the amounts prescribed, and no more frequently than prescribed.

Physicians should instruct patients and caregivers to read the patient information leaflet, which appears as the last section of the labeling.

- Do not take LORTAB Elixir if you are allergic to any of its ingredients.
- If you develop signs of allergy such as a rash or difficulty breathing stop taking LORTAB Elixir and contact your healthcare provider immediately.
- Do not take more than 4000 milligrams of acetaminophen per day. Call your doctor if you took more than the recommended dose.

Laboratory Tests

In patients with severe hepatic or renal disease, effects of therapy should be monitored with serial liver and/or renal function tests.

Drug Interactions

Patients receiving narcotics, antihistamines, antipsychotics, antianxiety agents, or other CNS depressants (including alcohol) concomitantly with hydrocodone bitartrate and acetaminophen oral solution may exhibit an additive CNS depression. When combined therapy is contemplated, the dose of one or both agents should be reduced.

The use of MAO inhibitors or tricyclic antidepressants with hydrocodone preparations may increase the effect of either the antidepressant or hydrocodone.

Drug/Laboratory Test Interactions

Acetaminophen may produce false-positive test results for urinary 5-hydroxyindoleacetic acid.

Carcinogenesis, Mutagenesis, Impairment Of Fertility

No adequate studies have been conducted in animals to determine whether hydrocodone has a potential for carcinogenesis, mutagenesis, or impairment of fertility.

Hydrocodone has not demonstrated mutagenic potential using the Ames Salmonella-Microsomal Activation test, the Basc test on *Drosophila* germ cells, and the Micronucleus test on mouse bone marrow.

No adequate studies have been conducted in animals to determine whether acetaminophen has a potential for carcinogenesis, mutagenesis, or impairment of fertility.

Acetaminophen has not demonstrated mutagenic potential using the Ames Salmonella-Microsomal Activation test, the Basc test on *Drosophila* germ cells, and the Micronucleus test on mouse bone marrow.

Pregnancy

Teratogenic Effects

Pregnancy Category C

There are no adequate and well-controlled studies in pregnant women. LORTAB Elixir should be used during pregnancy only if the potential benefit justifies the potential risk to the fetus.

Nonteratogenic Effects

Babies born to mothers who have been taking opioids regularly prior to delivery will be physically dependent. The withdrawal signs include irritability and excessive crying, tremors, hyperactive reflexes, increased respiratory rate, increased stools, sneezing, yawning, vomiting and fever. These signs usually appear during the first few days of life. The intensity of the syndrome does not always correlate with the duration of maternal opioid use or dose. There is no consensus on the best method of managing withdrawal.

Labor And Delivery

Narcotic analgesics cross the placental barrier. The closer to delivery and the larger the dose used, the greater the possibility of respiratory depression in the newborn. Narcotic analgesics should be avoided during labor if delivery of a premature infant is anticipated. If the mother has received narcotic analgesics during labor, newborn infants should be observed closely for signs of respiratory depression. Resuscitation may be required (see OVERDOSAGE). The effect of hydrocodone, if any, on the later growth, development, and functional maturation of the child is unknown.

Nursing Mothers

Acetaminophen is excreted in breast milk in small amounts, but the significance of its effects on nursing infants is not known. It is not known whether hydrocodone is excreted in human milk. Because many drugs are excreted in human milk and because of the potential for serious adverse reactions in nursing infants from hydrocodone and acetaminophen, a decision should be made whether to discontinue nursing or to discontinue the drug, taking into account the importance of the drug to the mother.

Pediatric Use

Safety and effectiveness in the pediatric population below the age of two years have not been established. Use of LORTAB Elixir in the pediatric population is supported by the evidence from adequate and well controlled studies of hydrocodone and acetaminophen combination products in adults with additional data which support the development of metabolic pathways in children two years of age and over (see DOSAGE AND ADMINISTRATION for pediatric dosage information).

Geriatric Use

Clinical studies of hydrocodone bitartrate and acetaminophen oral solution did not include sufficient numbers of subjects aged 65 and over to determine whether they respond differently from younger subjects. Other reported clinical experience has not identified differences in responses between the elderly and younger patients. In general, dose selection for an elderly patient should be cautious, usually starting at the low end of the dosing range, reflecting the greater frequency of decreased hepatic, renal, or cardiac function, and of concomitant disease or other drug therapy.

Hydrocodone and the major metabolites of acetaminophen are known to be substantially excreted by the kidney. Thus the risk of toxic reactions may be greater in patients with impaired renal function due to the accumulation of the parent compound and/or metabolites in the plasma. Because elderly patients are more likely to have decreased renal function, care should be taken in dose selection, and it may be useful to monitor renal function.

Hydrocodone may cause confusion and over-sedation in the elderly; elderly patients generally should be started on low doses of hydrocodone bitartrate and acetaminophen oral solution and observed closely.

ADVERSE REACTIONS

Potential effects of high dosage are also listed in the OVERDOSAGE section.

Cardio-renal

Bradycardia, cardiac arrest, circulatory collapse, renal toxicity, renal tubular necrosis, hypotension.

Central Nervous System/Psychiatric

Anxiety, dizziness, drowsiness, dysphoria, euphoria, fear, general malaise, impairment of mental and physical performance, lethargy, light-headedness, mental clouding, mood changes, psychological dependence, sedation, somnolence progressing to stupor or coma.

Endocrine

Hypoglycemic coma.

Gastrointestinal System

Abdominal pain, constipation, gastric distress, heartburn, hepatic necrosis, hepatitis, occult blood loss, nausea, peptic ulcer, and vomiting.

Genitourinary System

Spasm of vesical sphincters, ureteral spasm, and urinary retention.

Hematologic

Agranulocytosis, hemolytic anemia, iron deficiency anemia, prolonged bleeding time, thrombocytopenia.

Hypersensitivity

Allergic reactions.

Musculoskeletal

Skeletal muscle flaccidity.

Respiratory Depression

Acute airway obstruction, apnea, dose-related respiratory depression (see OVERDOSAGE), shortness of breath.

Special Senses

Cases of hearing impairment or permanent loss have been reported predominantly in patients with chronic overdose.

Skin

Cold and clammy skin, diaphoresis, pruritus, rash.

DRUG ABUSE AND DEPENDENCE

Misuse, Abuse, And Diversion Of Opioids

LORTAB Elixir contains hydrocodone, an opioid agonist, and is a Schedule III controlled substance. LORTAB Elixir, and other opioids, used in analgesia can be abused and are subject to criminal diversion.

Addiction is a primary, chronic, neurobiologic disease, with genetic, psychosocial, and environmental factors influencing its development and manifestations. It is characterized by behaviors that include one or more of the following: impaired control over drug use, compulsive use, continued use despite harm, and craving. Drug addiction is a treatable disease utilizing a multidisciplinary approach, but relapse is common.

“Drug seeking” behavior is very common in addicts and drug abusers. Drug-seeking tactics include emergency calls or visits near the end of office hours, refusal to undergo appropriate examination, testing or referral, repeated “loss” of prescriptions, tampering with prescriptions and reluctance to provide prior medical records or contact information for other treating physician(s). “Doctor shopping” to obtain additional prescriptions is common among drug abusers and people suffering from untreated addiction.

Abuse and addiction are separate and distinct from physical dependence and tolerance. Physical dependence usually assumes clinically significant dimensions only after several weeks of continued opioid use, although a mild degree of physical dependence may develop after a few days of opioid therapy. Tolerance, in which increasingly large doses are required in order to produce the same degree of analgesia, is manifested initially by a shortened duration of analgesic effect, and subsequently by decreases in the intensity of analgesia. The rate of development of tolerance varies among patients. Physicians should be aware that abuse of opioids can occur in the absence of true addiction and is characterized by misuse for non-medical purposes, often in combination with other psychoactive substances. LORTAB Elixir, like other opioids, may be diverted for non-medical use. Record-keeping of prescribing information, including quantity, frequency, and renewal requests is strongly advised.

Proper assessment of the patient, proper prescribing practices, periodic re-evaluation of therapy, and proper dispensing and storage are appropriate measures that help to limit abuse of opioid drugs.

OVERDOSAGE

Following an acute overdose, toxicity may result from hydrocodone or acetaminophen.

Signs And Symptoms

Hydrocodone

Serious overdose with hydrocodone is characterized by respiratory depression (a decrease in respiratory rate and/or tidal volume, Cheyne-Stokes respiration, cyanosis) extreme somnolence progressing to stupor or coma, skeletal muscle flaccidity, cold and clammy skin, and sometimes bradycardia and hypotension. In severe overdose, apnea, circulatory collapse, cardiac arrest and death may occur.

Acetaminophen

In acetaminophen overdose: dose-dependent, potentially fatal hepatic necrosis is the most serious adverse effect. Renal tubular necrosis, hypoglycemic coma and coagulation defects may also occur. Early symptoms following a potentially hepatotoxic overdose may include: vomiting, diaphoresis and general malaise. Clinical and laboratory evidence of hepatic toxicity may not be apparent until 48 to 72 hours post-ingestion.

Treatment

A single or multiple drug overdose with hydrocodone and acetaminophen is a potentially lethal polydrug overdose, and consultation with a regional poison control center is recommended. Immediate treatment includes support of cardiorespiratory function and measures to reduce drug absorption. Oxygen, intravenous fluids, vasopressors, and other supportive measures should be employed as indicated. Assisted or controlled ventilation should also be considered.

For hydrocodone overdose, primary attention should be given to the reestablishment of adequate respiratory exchange through provision of a patent airway and the institution of assisted or controlled ventilation. The narcotic antagonist naloxone hydrochloride is a specific antidote against respiratory depression which may result from overdose or unusual sensitivity to narcotics, including hydrocodone. Since the duration of action of hydrocodone may exceed that of the antagonist, the patient should be kept under continued surveillance, and repeated doses of the antagonist should be administered as needed to maintain adequate respiration. A narcotic antagonist should not be administered in the absence of clinically significant respiratory or cardiovascular depression.

Gastric decontamination with activated charcoal should be administered just prior to N-acetylcysteine (NAC) to decrease systemic absorption if acetaminophen ingestion is known or suspected to have occurred within a few hours of presentation. Serum acetaminophen levels should be obtained immediately if the patient presents 4 hours or more after ingestion to assess potential risk of hepatotoxicity; acetaminophen levels drawn less than 4 hours post-ingestion may be misleading. To obtain the best possible outcome, NAC should be administered as soon as possible where impending or evolving liver injury is suspected. Intravenous NAC may be administered when circumstances preclude oral administration.

Vigorous supportive therapy is required in severe intoxication. Procedures to limit the continuing absorption of the drug must be readily performed since the hepatic injury is dose dependent and occurs early in the course of intoxication.

DOSAGE AND ADMINISTRATION

Dosage should be adjusted according to severity of pain and response of the patient. However, it should be kept in mind that tolerance to hydrocodone can develop with continued use and that the incidence of untoward effects is dose related.

The usual adult dosage is one tablespoonful every 4 to 6 hours as needed for pain. The total daily dosage for adults should not exceed 6 tablespoonfuls. The usual dosages for children are given by the table below, and are to be given every 4 to 6 hours as needed for pain. These dosages correspond to an average individual dose of 0.27 mL/kg of LORTAB Elixir (providing 0.135 mg/kg of hydrocodone bitartrate and 9 mg/kg of acetaminophen). Dosing should be based on weight whenever possible.

BODY WEIGHT	APPROXIMATE AGE	DOSE Every 4 to 6 hours	MAXIMUM TOTAL DAILY DOSE (6 doses per day)
12 to 15 kg 27 to 34 lbs.	2 to 3 years	$\frac{3}{4}$ teaspoonful = 3.75 mL	4 $\frac{1}{2}$ teaspoonfuls = 22.5 mL
16 to 22 kg 35 to 50 lbs.	4 to 6 years	1 teaspoonful = 5 mL	6 teaspoonfuls = 30 mL
23 to 31 kg 51 to 69 lbs.	7 to 9 years	1 $\frac{1}{2}$ teaspoonfuls = 7.5 mL	9 teaspoonfuls = 45 mL
32 to 45 kg 70 to 100 lbs.	10 to 13 years	2 teaspoonfuls = 10 mL	12 teaspoonfuls = 60 mL
46 kg and up 101 lbs. and up	14 years to adult	1 Tablespoonful = 15 mL	6 Tablespoonfuls = 90 mL

The total daily dosage for children should not exceed 6 doses per day. It is of utmost importance that the dose of LORTAB Elixir be administered accurately. A household teaspoon or tablespoon is not an adequate measuring device, especially when one-half or three-fourths of a teaspoonful is to be measured. Given the inexactitude of the household spoon measure and the possibility of using a tablespoon instead of a teaspoon, which could lead to overdosage, it is strongly recommended that care givers obtain and use a calibrated measuring device. Health care providers should recommend a dropper that can measure and deliver the prescribed dose accurately, and instruct care givers to use extreme caution in measuring the dosage.

HOW SUPPLIED

LORTAB Elixir (hydrocodone bitartrate and acetaminophen oral solution) is a yellow-colored tropical fruit punch flavored liquid containing hydrocodone bitartrate 7.5 mg and acetaminophen 500 mg per 15 mL, with 7% alcohol. It is supplied in containers of 1 pint (473 mL) NDC 50474-909-16.

Storage

Store at 20 to 25°C (68 to 77°F). [see USP Controlled Room Temperature] Dispense in a tight, light-resistant container with a child-resistant closure.

For Medical Information

Contact: Medical Affairs Department
Phone: (866) 822-0068
Fax: (770) 970-8859

A Schedule CIII Narcotic



Manufactured for **UCB, Inc.**
Smyrna, GA 30080

Rev. 8E 05/2011

PATIENT INFORMATION LEAFLET

LORTAB® ELIXIR



Hydrocodone Bitartrate and Acetaminophen Oral Solution 7.5 mg/500 mg per 15 mL

Summary

LORTAB (pronounced LOR-tab) is used to relieve moderate to moderately severe pain. You should not take LORTAB Elixir if you are allergic to hydrocodone or acetaminophen. The most common side effects of LORTAB Elixir are abdominal pain, dizziness, drowsiness, light-headedness, nausea, shortness of breath, unusual tiredness, and vomiting. Take this medicine as directed by your doctor. Do not take more of it, do not take it more often, and do not take it for a longer time than your doctor ordered.

Uses

LORTAB Elixir is an analgesic used to relieve moderate to moderately severe pain. Lortab Elixir is a combination product containing hydrocodone (hydroe-KO-done) bitartrate and acetaminophen (a-seat-a-MIN-oh-fen). Hydrocodone is a narcotic pain reliever and a cough suppressant. Acetaminophen is a non-narcotic pain reliever and fever reducer. A narcotic analgesic and acetaminophen used together may provide better pain relief than either product used alone. If you have any questions, please call your doctor or pharmacist.

General Cautions

- Do not take this drug if you have allergies or unusual reactions to narcotic pain relievers or acetaminophen because it is likely that you

may also be allergic to LORTAB Elixir.

- This product may inhibit your mental and physical abilities required for the performance of potentially hazardous tasks such as driving a car or operating machinery. Such tasks should be avoided while you are taking this product.
- This medicine may not be right for you. Check with your doctor or pharmacist, if you:
 - are pregnant.
 - are nursing.
 - are taking other medications; narcotic pain relievers; allergy medicines; anti-depressant medicines; acetaminophen-containing medicines or other medicines that cause central nervous system depression, including alcohol.
 - have other medical problems: a history of drug or alcohol abuse; recent head injury; emphysema, asthma, or other chronic lung disease; liver disease, kidney disease; underactive thyroid, Addison's disease, enlarged prostate or difficulty urinating.

Proper Use

Take this medicine as directed by your doctor. Do not share it with anyone else. This medicine can cause drug dependence and has the potential for abuse. Do not take more of it, do not take it more often, and do not take it for a longer time than your doctor ordered. If you think that this medicine is not working properly after taking it for some time, do not increase the dose. Check with your doctor or pharmacist.

Dosing

The dose of this medication will be different for different patients. Follow the directions provided by your doctor. The following information includes only the average doses of this medication. *If your dose is different, do not change doses unless your doctor tells you to do so.*

BODY WEIGHT	APPROXIMATE AGE	DOSE Every 4 to 6 hours	MAXIMUM TOTAL DAILY DOSE (6 doses per day)
12 to 15 kg 27 to 34 lbs.	2 to 3 years	$\frac{3}{4}$ teaspoonful = 3.75 mL	4 $\frac{1}{2}$ teaspoonfuls = 22.5 mL
16 to 22 kg 35 to 50 lbs.	4 to 6 years	1 teaspoonful = 5 mL	6 teaspoonfuls = 30 mL
23 to 31 kg 51 to 69 lbs.	7 to 9 years	1 $\frac{1}{2}$ teaspoonfuls = 7.5 mL	9 teaspoonfuls = 45 mL
32 to 45 kg 70 to 100 lbs.	10 to 13 years	2 teaspoonfuls = 10 mL	12 teaspoonfuls = 60 mL
46 kg and up 101 lbs. and up	14 years to adult	1 Tablespoonful = 15 mL	6 Tablespoonfuls = 90 mL

It is very important that LORTAB Elixir be dosed accurately. A household teaspoon or tablespoon is not an accurate measuring device, especially when one-half or three-fourths of a teaspoonful is to be measured.

Since a household teaspoon is not accurate and can be mixed-up with a tablespoon (which can cause overdose), it is strongly recommended that you obtain and use a proper measuring device. Ask your doctor or pharmacist for help to find a dropper that can measure the needed dose properly and ask for help if you do not understand how to use the dropper.

Missed Dose

- To avoid a possible overdose, it is important that you do not take more than a single dosage at one time, or that you don't take doses at intervals less than 4 hours apart.
- If you miss taking a dose of LORTAB Elixir, take it as soon as you remember. However, make sure to wait at least 4 hours before taking your next dose.
- If you missed taking a dose, and it is almost time for your next dose, skip the missed dose and take your medicine as scheduled.
- Do not double the prescribed dose.

Possible Side Effects

Side effects you may experience include abdominal pain, constipation, difficulty urinating, dizziness, drowsiness, fear, fuzzy thinking, general feeling of discomfort or illness, light-headedness, mood changes, nausea, nervousness, rash, shortness of breath, slower reactions, unusual tiredness, and vomiting.

Call your doctor if these effects continue or are bothersome.

Side effects not listed above may sometimes occur. If you notice any other effects, check with your doctor.

Storage

- Keep out of the reach of children.
- Store at room temperature (protect from heat, do not refrigerate).
- Keep in original labeled bottle.
- Discard medicines that are old or no longer needed.
- Even a single overdose of this medicine may be a life-threatening situation. If you suspect that you or someone else may have taken more than the prescribed dose of this medicine, contact your local poison control center or emergency room immediately. This medicine was prescribed for your particular condition. Do not use if for another condition or give the drug to others.
- This leaflet provides a summary of information about LORTAB Elixir. If you have any questions or concerns, or want more information about LORTAB Elixir, contact your doctor or pharmacist. Your pharmacist also has a longer leaflet about LORTAB Elixir that is written for health professionals that you can ask to read.



Prepared by UCB, Inc.

Rev. 8E 05/2011